

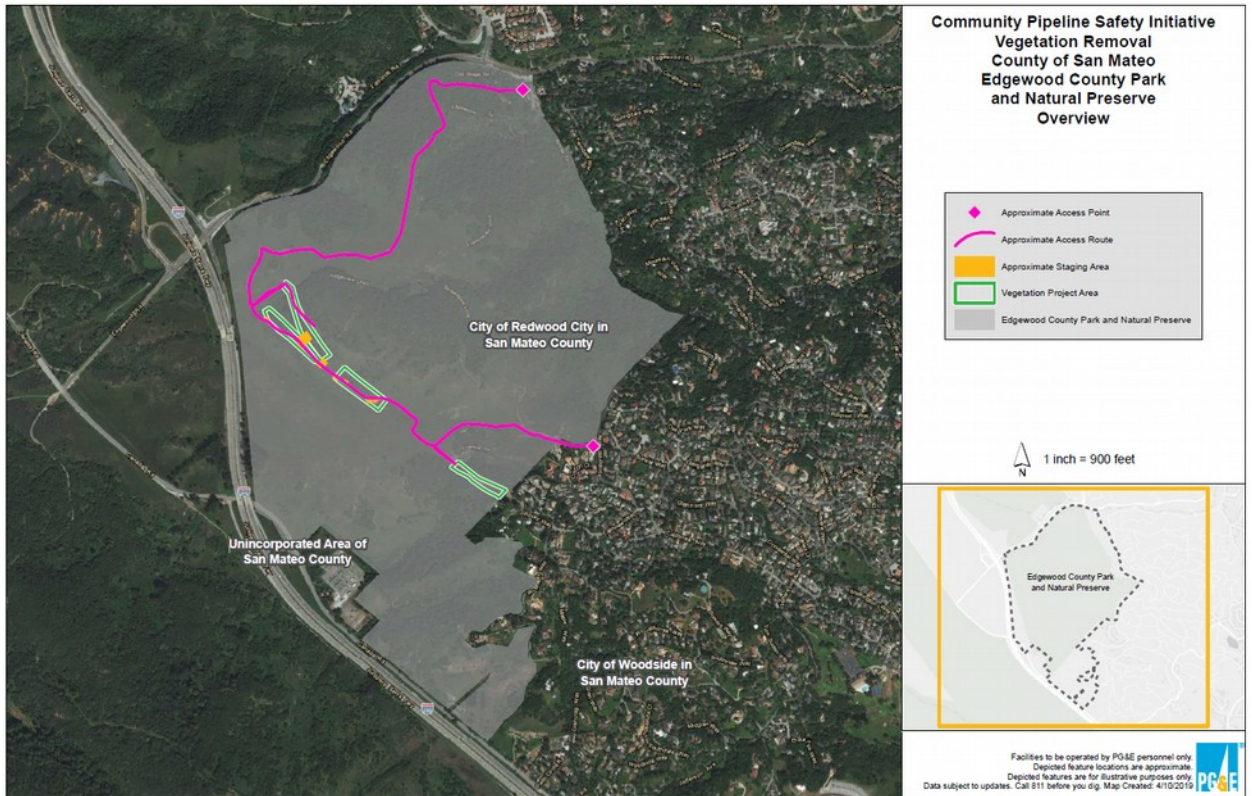
PG&E Activity

Update by Bill Korbholz

1. Community Pipeline Safety Initiative – Vegetation Removal

PG&E has removed vegetation along the traces of their two gas pipelines as part of their region-wide pipeline safety initiative. The map below shows the locations of vegetation removal. This activity was completed in November, and now PG&E plans to install split-rail fencing at the intersections of the cuts with the Sunset and Franciscan Trails to prevent visitors from mistaking the cuts for new trails.

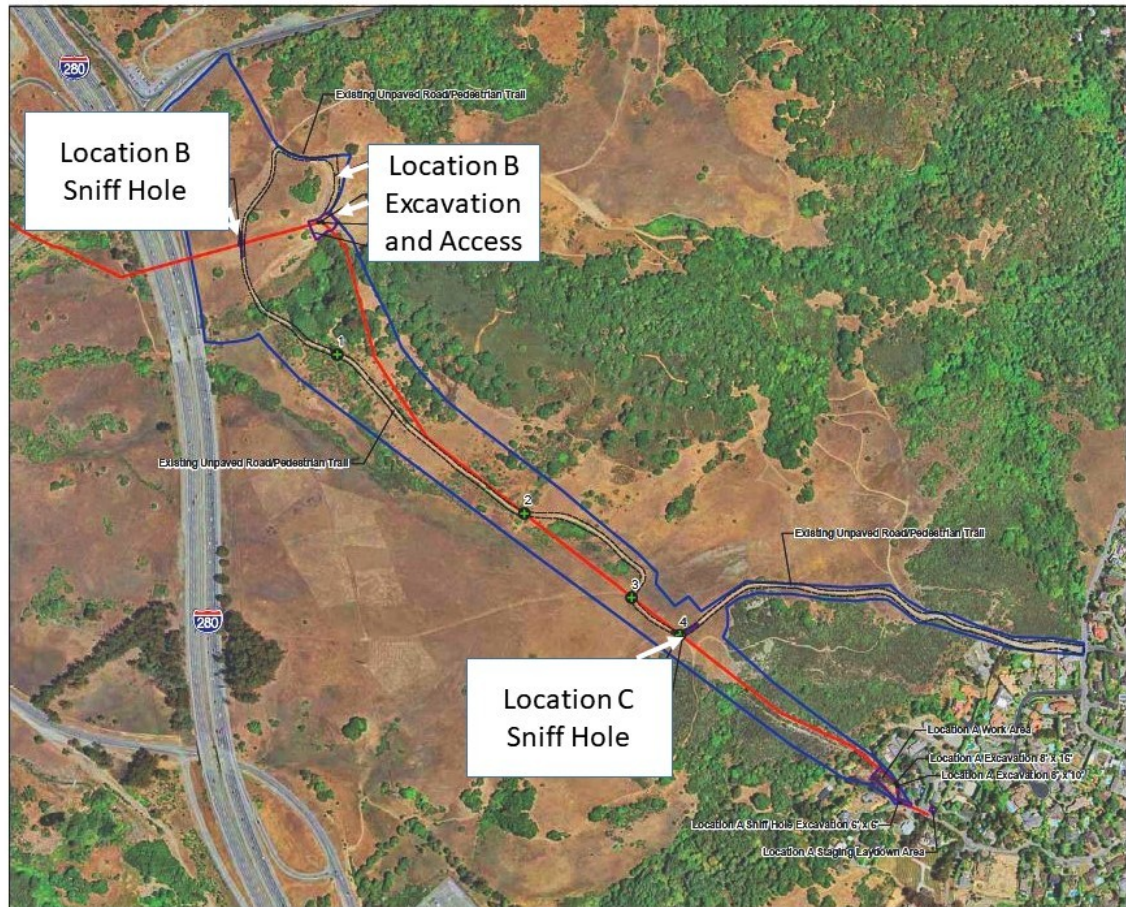




2. **Electrical Transmission Lines Fuel Break**
 CalFire and PG&E are collaborating to create a shaded fuel break along the southeastern boundary of the park under the electrical transmission lines and around the towers and substations. They will be doing mechanical thinning within 100 feet from the substations and clearing of all vegetation within 30 feet of the lines. Planning for this work began in spring 2019 and the work will continue through the end of the year.

3. **Electrical Tower Maintenance**
 Periodically, PG&E drives equipment into the Bay checkerspot butterfly area to monitor and maintain their towers.

4. **T-1101 Hydrotest Restoration**
 PG&E completed a pressure test of their Line 109 gas pipeline in October, 2015. In order to conduct the test, they dug two 6'x6' "sniff holes" (locations B and C on the map below) and one much larger "bell" hole (location B).



PG&E submitted a 5-year restoration and monitoring plan in December 2015 calling for site monitoring and restoration efforts, and filing of an annual report. We have received the first 3 annual reports; the year 4 report is due December 2019.

The restoration plan calls for year-over-year reductions in percent cover of weed species, ultimately achieving by year 5 no greater weed cover than in the reference sites.

As of the year 3 report, all three sites have failed to meet restoration requirements. We are anxiously awaiting the arrival of the year 4 report.

If, by the end of year 5, the restoration has failed to achieve its objectives, then US Fish and Wildlife Service will require further mitigation measures of PG&E.

5. Gas Pipeline Visual Inspection Restoration

In September 2018, PG&E dug two 6'x6' holes near the Sunset Trail in order to visually inspect the Line 132 gas pipeline that runs underground there. They had previously performed inline inspections of the line, part of their regional inspections, and found evidence for concern. The digs resulted in considerable habitat disturbance since equipment had to access the dig sites from the Sunset Trail, and from the staging of equipment and piling of dirt near the holes. In all,

each of the dig sites caused a disturbance of around 4,000 sq. ft. By way of compensation, PG&E offered to fund the development of a 3-year restoration and monitoring plan, which was completed by Creekside Science in December 2018.



In September 2019, Creekside published their year 1 monitoring report. At Site 67, the southeasterly site, which is within the high-quality Bay checkerspot butterfly habitat, increases were noted in tocalote (*Centaurea melitensis*), purple falsebrome (*Brachypodium distachyon*), and other non-native grasses. This is unsettling because of the high value of this habitat. There was also an increase in bare ground, as plants have not completely recolonized.

At the other location, Site 68, there was also an increase in non-native cover, but this is less alarming because the native shrubs are expected to outcompete these weeds over time.

Creekside has recommended asking the Weed Warriors to hand pull tocalote and monitor weeds at Site 67, and to ask the Parks Dept. to string cut the non-native grasses there next spring.